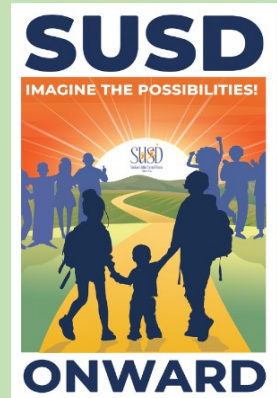




Ask Dr. Rodriguez



Ten Frequently Asked Questions (FAQs)

Edition #26 2024-25 School Year – Week of February 24, 2025

Questions are quoted as I received them directly from our community.

1. I heard ICE is doing raids in Stockton, do you know if this is true?

The District recently participated in an Immigration Townhall with Congressman Josh Harder and San Joaquin Sheriff Pat Withrow. During the Townhall, Sheriff Withrow advised he met with I.C.E. and Homeland Security who confirmed they had not conducted any enforcement in our county. The Sheriff requested that local law enforcement be notified if there were intended raids in our community to help ensure our community and I.C.E. agents are safe. Unfortunately, there have been people impersonating I.C.E. agents in unmarked vehicles in efforts to scare or take advantage of our immigrant community. If an unmarked vehicle attempts to detain you and you are unsure if they are any type of law enforcement, you are encouraged by the Sheriff and our SUSD Police Chief to call 9-1-1 and provide them with your location. They will be able to notify you if one of our local agencies is in fact conducting a stop and if not, send officers your way to help. Also, ask for the officer to show their law enforcement I.D., which they are required to have on them at all times. Below are pictures of the I.C.E. and Homeland Security vehicles and patches.



2. One of my parents told me that she paid \$20 for a “red card” at the swap meet. Should they be charging them?

Staff, students, parents, and community members should not be charged for immigration red cards. These cards are available for free through the District and various community organizations. Alternatively, individuals with printing capabilities can download and

print them directly from the Immigrant Legal Resource Center's website at <https://www.ilrc.org/>. It is important to ensure everyone has access to these resources without any financial barrier.

3. Did we have a good turnout for the Family Resource Fair this week? Will we do more in future weeks?

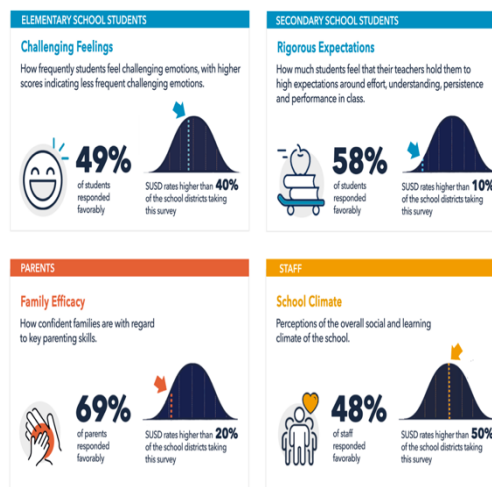
We had an outstanding turnout at this week's SUSD Health and Wellness Resource Fair, with 695 students, parents, and community members in attendance. The event also saw increased participation from both community-based organizations and student groups, making it a truly collaborative effort. We are actively working with local partners to assess the need for future events and will share updates if additional Resource Fairs are planned. In the meantime, you can catch highlights from the event at this [link](#).

4. Why are you doing the Panorama Survey again? What were the results from last year?

We are conducting the Panorama Survey again because we are committed to gathering ongoing feedback from our students, staff, and parents to assess our progress and ensure continuous improvement. We first implemented the survey last year to establish a baseline and track yearly growth in key areas. Last year, 20,575 people participated, providing valuable insights into both our strengths and areas for growth. The results helped us celebrate successes and identify opportunities for improvement. Most importantly, we used the data to inform our Local Control Accountability Plan, integrating action steps to enhance our schools based on the feedback we received. Below you will see the infographic we created to highlight those results. By conducting the survey again, we can measure the impact of our efforts and continue making meaningful improvements to better support our school community.



EMBRACING OPPORTUNITIES



5. **I heard that my position is being eliminated. Is the district doing layoffs?**

SUSD will not be implementing any layoffs for the 2024-25 school year. Staff currently employed in the 2024-25 school year are expected to return for the 2025-26 school year. However, due to declining enrollment, the district must ensure it stays within budget. As part of this routine process, staffing adjustments occur annually in Feb/March based on student enrollment and program needs. This may result in some positions at certain sites being closed, requiring staff in those roles to be reassigned to a current vacancy within the district.

While this year may involve a slightly higher number of position adjustments, impacted employees will not lose their jobs but will instead be transferred to locations where their expertise is needed. This ensures continued employment while aligning staffing with district needs.

6. **When are the shade structures supposed to be completed? The playground and blacktops have been blocked off since Winter Break and there has been no movement for weeks.**

Currently, construction efforts by Clark-Sullivan, Inc. and AM Stephens, Inc. are progressing, with schedules designed to minimize disruptions while ensuring efficient progress. The 55 school sites have been divided into four groups. Temporary fencing has been installed across multiple school sites, and demolition activities are underway or nearing completion for Groups A, B, and D. Below is a chart showing which schools are in each group:

Group A	1	Nightingale Charter
	2	Taylor Leadership Academy
	3	Marshall (John) Elementary
	4	McKinley Elementary School
	5	San Joaquin Elementary
	6	Van Buren Elementary School
	7	Monroe Elementary School
	8	Hamilton (Alexander) Elementary
	9	Merlo (Edward C.) Institute of Environmental Studies
	10	Montezuma Elementary School
Group B	11	Hazleton Elementary School
	12	Washington (George) Elementary School
	13	Spanos (Alex G.) Elementary
	14	Henry (Wilhelmina) Elementary
	15	Roosevelt Elementary
	16	Stockton-High
	17	Frederick (Hazel) High
	18	Weber Institute
	19	King Elementary School
	20	Victory Elementary School
Group C	21	Elmwood Elementary School
	22	Pittman Charter
	23	Fremont (John C.) Elementary School
	24	Franklin High School
	25	Fillmore Elementary School
	26	El Dorado Elementary School
	27	Grunsky Elementary
	28	Wilson Elementary School
	29	August Elementary School
	30	Cleveland Elementary School
Group D	31	Kohl Open Elementary
	32	Pacific-Low Academy
	33	Stagg Senior High School
	34	Walton Development Center
	35	Harrison Elementary School
	36	Peyton (Valentine) Elementary
	37	Rio Calaveras Elementary School
	38	Bush (George W.) Elementary School
	39	Mata (Flora Arca) Elementary School
	40	Adams Elementary School
Group D	41	Hong Kingston (Maxine) Elementary School
	42	Cesar Chavez High School
	43	Pulliam Elementary
	44	Kennedy Elementary School
	45	Huerta (Dolores) Elementary
	46	Edison High School
	47	Commodore Stockton Skills Elementary School
	48	Hoover Elementary School
	49	Madison Elementary
	50	Primary Years Academy (Former Tyler ES)
	51	Taft Elementary

As of now, the shade structures have been completed at six schools in Group A, with ongoing installations expected in Groups A and B. Group D will commence installations within the next two weeks. We understand the importance of minimizing impact on student activities and have requested contractors to expedite fencing processes where feasible to allow students to continue to use open space areas for as long as possible.

7. When will I receive my son's report card? Will I receive it by mail?

Report cards for students in grades TK-6 and K-8 special education are generated in Illuminate and will be sent home with students by their classroom teacher during the week of March 3rd. For students in grades 7-12, report cards are completed in Synergy and will be mailed home during the same week.

8. Who do we contact if we need to repair our access control system?

If you need to repair your access control system, please submit a help ticket through our Technology and Innovation department. You can easily do so by visiting the following link: [Help Ticket Submission](#). This will ensure that your issue with the video/intercom access control is promptly addressed.

9. When will CPI training be available? How do I sign up?

The next Crisis Prevention Institute (CPI) training at Hazelton Elementary on March 14, 2025 is currently at capacity. However, additional trainings will be scheduled throughout the year and during the summer months. Monthly training schedules are released as they are finalized. To sign up for upcoming CPI trainings, please visit Kickup at <https://pulse.kickup.co/>. This platform will have the most current information and registration details.

10. I saw on the district's website an event for the 5th Anniversary of the Stay At Home Order. What is planned for that event?

We hope this event will serve as a restorative community gathering that reflects on our collective strength and resilience over the past five years. The event will feature community painting, a performance by SUSD instrumental music students from Stagg High School, and poetry from Stockton's Poet Laureate. We look forward to coming together in reflection and hope.

